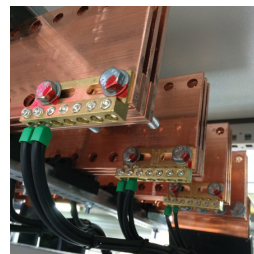
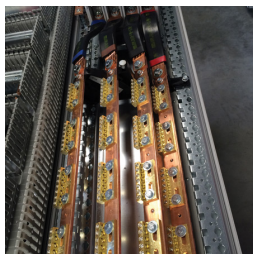
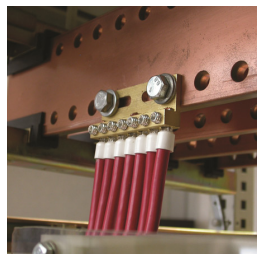
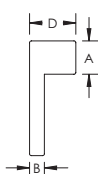
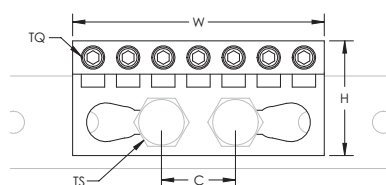


Universal Connecting Bar – CB7X16 (553150)



nVent ERICO Connecting, Earthing and Neutral Busbars are used to connect several earthing conductors within a panel and can be used in a variety of different applications including switchgear and control equipment, electrical equipment, for wind and solar power generation and in data centers. This Universal Connecting Bar can be used as a 450A current rating IEC for power distribution.

- Easy to wire with a hexagonal key
- Design allows for visual inspection of conductor and confirmation of connection
- For use with punched or threaded copper busbar
- High fill ratio allows output connection with or without terminal
- Quick and easy installation
- RoHS compliant



Part Number	CB7X16
Article Number	553150
Material	Brass
Max Current Rating	450 A
Number of Tunnel Connections	7
Conductor Size, IEC	[7] 1.5 - 16 mm ² Stranded
Ferrule Conductor Size, IEC	[7] 1.5 - 16 mm ²
Conductor Size, UL	[7] #10 - #6 Solid [7] #8 - #4 Stranded
Depth (D)	0.49"
Height (H)	1.22"
Width (W)	2.68"
A	0.35"
B	0.16"
Torque (TQ)	2.58 ft lb
Unit Weight	0.18 lb
Certifications	CE cULus RoHS

Part Number	CB7X16
Standard Packaging Quantity	10 pc
UPC	78285687688
EAN-13	3479775531502

Thread Size TS	C
M5	0.71"
M6	0.69"; 0.98"
M8	0.79"; 0.98"
M10	0.98"

UL, UR, cUL, cUR, cULus and cURus are registered certification marks of UL LLC.

© 2019 nVent All rights reserved
nVent, nVent CADDY, nVent ERICO, nVent ERIFLEX and nVent LENTON are owned by nVent or its global affiliates.
All other trademarks are the property of their respective owners. nVent reserves the right to change specifications without prior notice.